



“Empowerment through quality technical education”

**Dr. D. Y. PATIL SCHOOL OF ENGINEERING**

(Approved By AICTE, New Delhi Recognized by Govt. of Maharashtra, Affiliated to Savitribai Phule Pune University).

AISHE Code: C-46648 DTE Code: EN6732 SPPU PUN Code: CEGPO15720

(Accredited by NAAC)

### ***7.1.4 Water Conservation Facilities Available In the Institution***

Documents Enclosed:

1. Rainwater Harvesting
2. Bore well / Open well recharge
3. Constructions of tanks and bunds
4. Water Test Reports
5. Wastewater Recycling Plant [STP]
6. Water Bodies in the Campus



“Empowerment through quality technical education”  
**Dr. D. Y. PATIL SCHOOL OF ENGINEERING**  
(Approved By AICTE, New Delhi Recognized by Govt. of Maharashtra, Affiliated to Savitribai Phule Pune University).  
AISHE Code: C-46648 DTE Code: EN6732 SPPU PUN Code: CEGPO15720  
(Accredited by NAAC)

### 7.1.4 Water conservation facilities available in the Institution

**A] Rainwater Harvesting:** The Institute has roof rainwater harvesting facility. The water from roof is collected in the chambers and through this chambers was joined to the cross drain work of roads, of which water flows with natural ground slope and flows as underground water flow which was finally discharged in the lake.



**Roof water pipes are connected to chambers**



**Road Cross Drainage Work which was connected to the chambers located in the campus**



**Chambers located at various Locations in the campus**

**B] Bore well / Open well recharge:**

Bore well are provided at different locations in the campus.

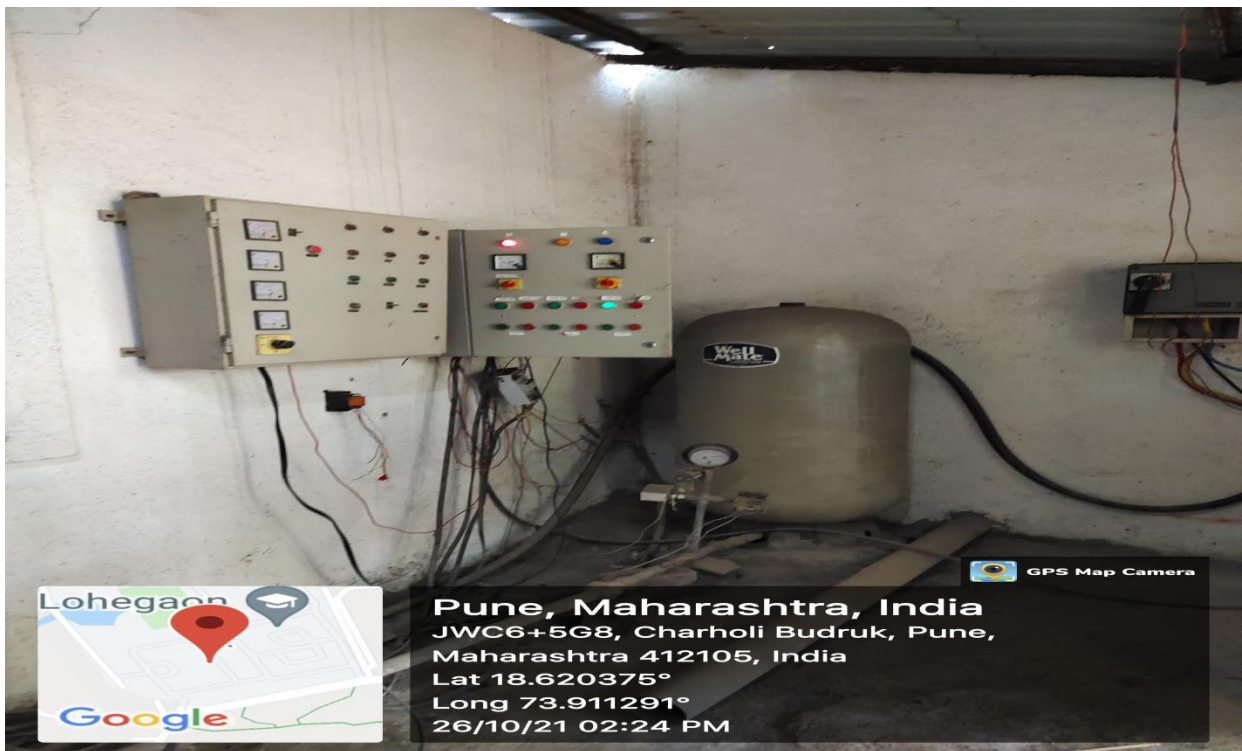


**Water Supply Scheme is present in the campus**



**Bore well is provided in the campus in the vicinity of lake**

**C] Constructions of tanks and bunds:**



**Ground Water Storage Tank**



**Overhead Water Tank Fitted with R.O. System**

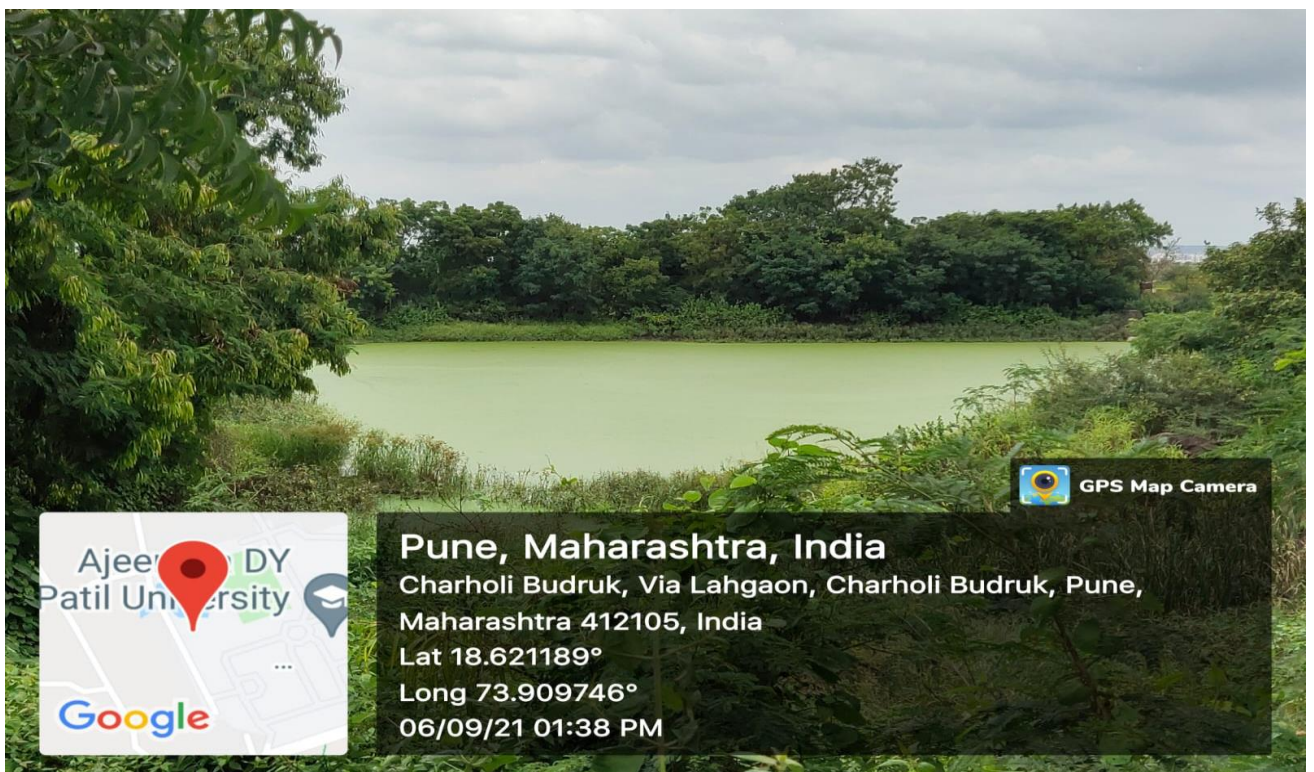
## D] Wastewater Recycling Plant [STP]:



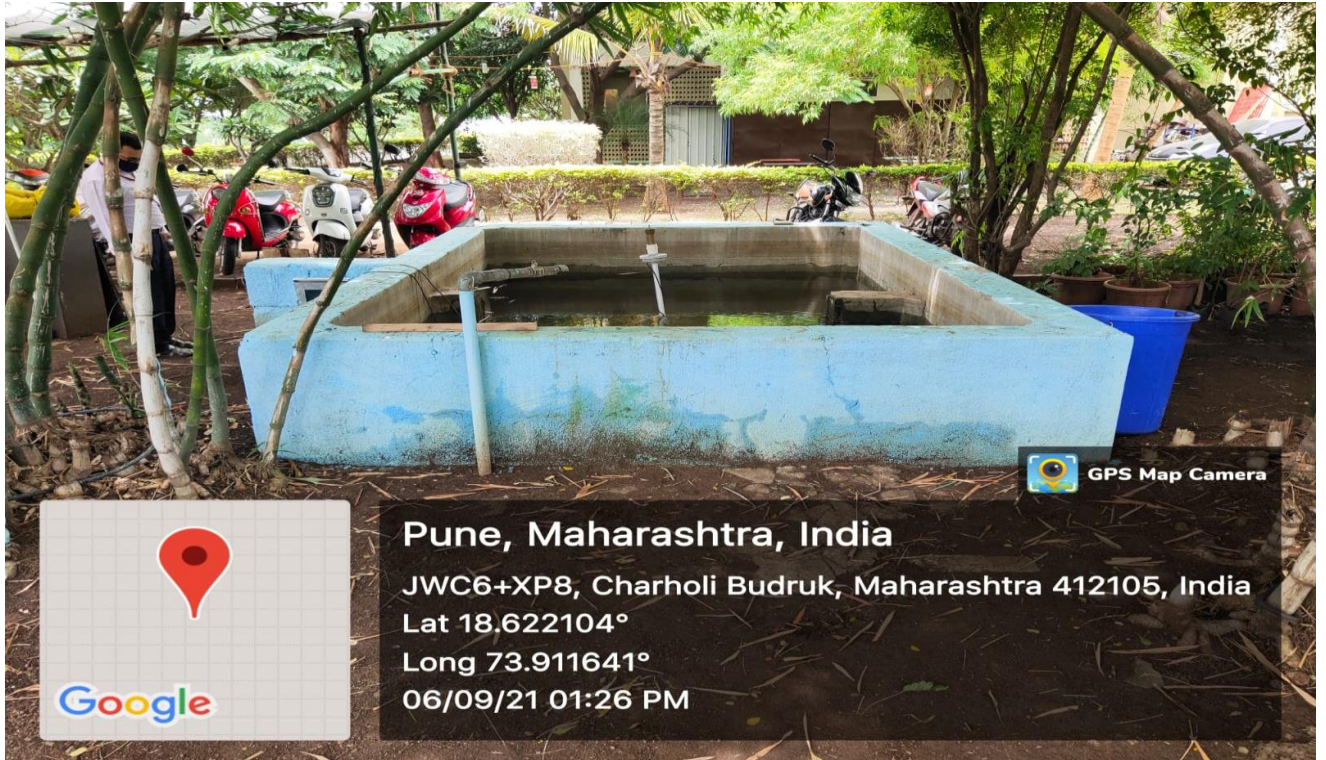
**STP is located in the Campus**



**E] Water Bodies in the Campus:**



**Two water Lakes are located in the campus**



**Ground Water Storage Tanks are Located at different locations in the Campus**